



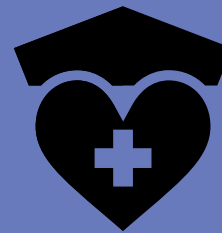
SECTOR PROFILE:

WORCESTERSHIRE'S HEALTH AND CARE SECTOR

WHAT IS THE HEALTH AND CARE SECTOR IN WORCESTERSHIRE?

The Health and Care sector in Worcestershire brings together public and private sector organisations, employing 38,000 people and providing essential services. Worcestershire is home to 2 NHS Trusts which cover 3 acute hospitals in Worcester, Redditch, and Kidderminster and 7 community hospitals/rehabilitation units across the county.

The sector has always been adaptive, supporting the needs of all age groups within the population and responsive to innovation, the development of medicines and disease prevention initiatives. However, the COVID-19 pandemic has illustrated the potential for technology-based innovations – from track and trace apps to online consultations – and the speed at which innovation in this sector is now moving forward. This is one of Worcestershire's emerging sectors, offering significant opportunities for the future growth of the county's economy including segments such as instrumentation, devices & equipment manufacture, research & development, healthcare services and assistive technology & diagnostics.



**38,000
PEOPLE
EMPLOYED**



**1,000
BUSINESSES**



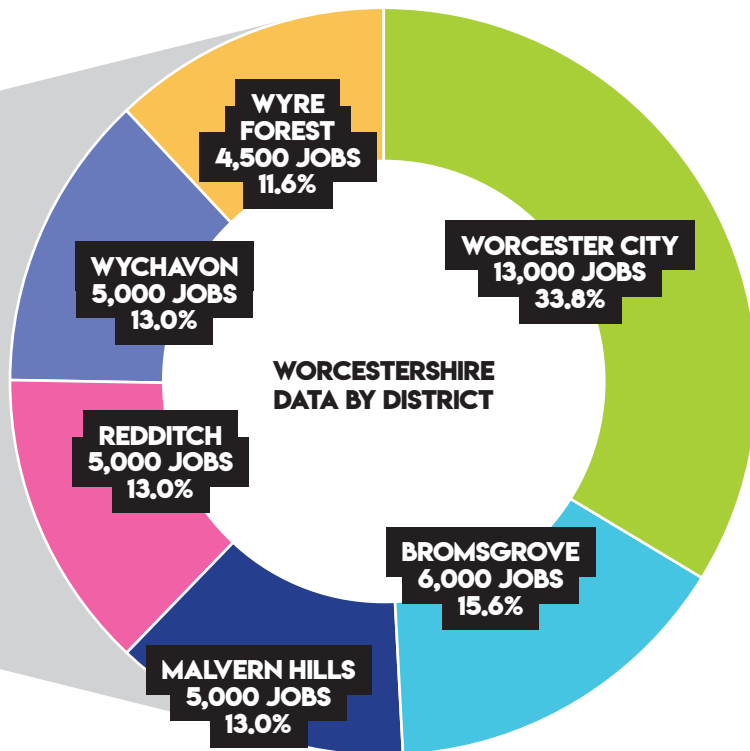
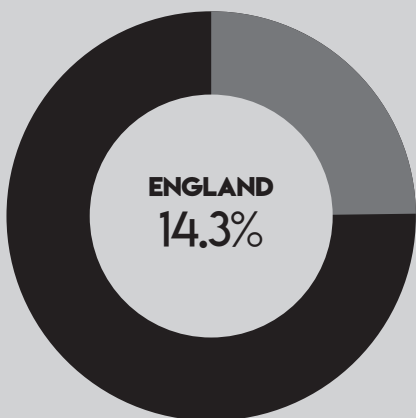
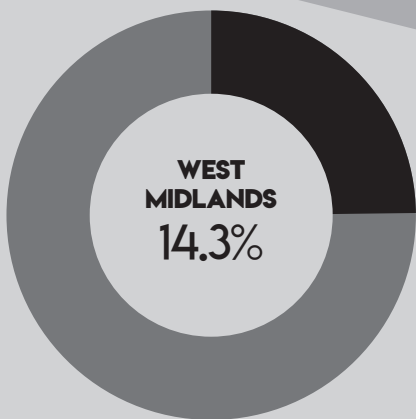
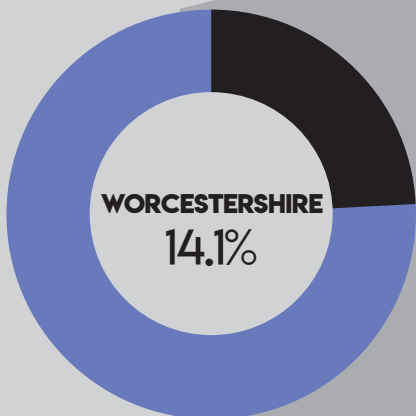
**£475M GVA*
GENERATED
BY TOP 50
BUSINESSES**

* GVA = Gross value added is an economic productivity metric that measures the contribution of a corporate subsidiary, company, or municipality to an economy, producer, sector, or region

WHAT DOES THE HEALTH AND CARE SECTOR LOOK LIKE IN WORCESTERSHIRE?

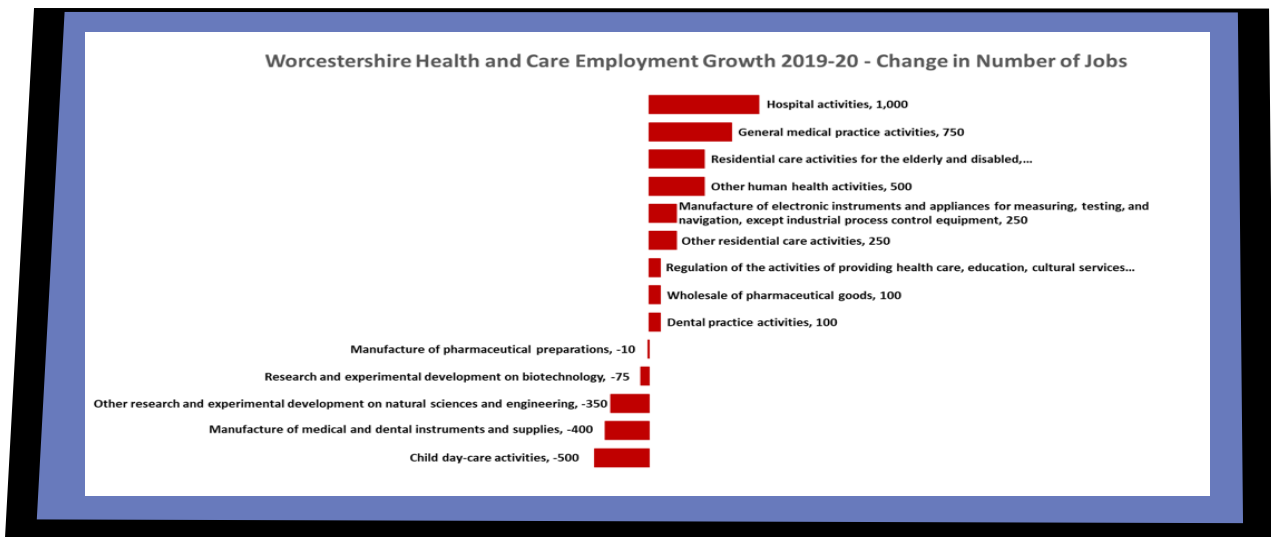
This graph highlights the number of jobs in the Health and Care sector in comparison to both the West Midlands and England. This also highlights the distribution of jobs in the individual districts of Worcestershire County to determine which areas currently have the most jobs available and are likely to see the most growth in the future.

HEALTH AND CARE JOBS AS A % OF TOTAL WORKFORCE

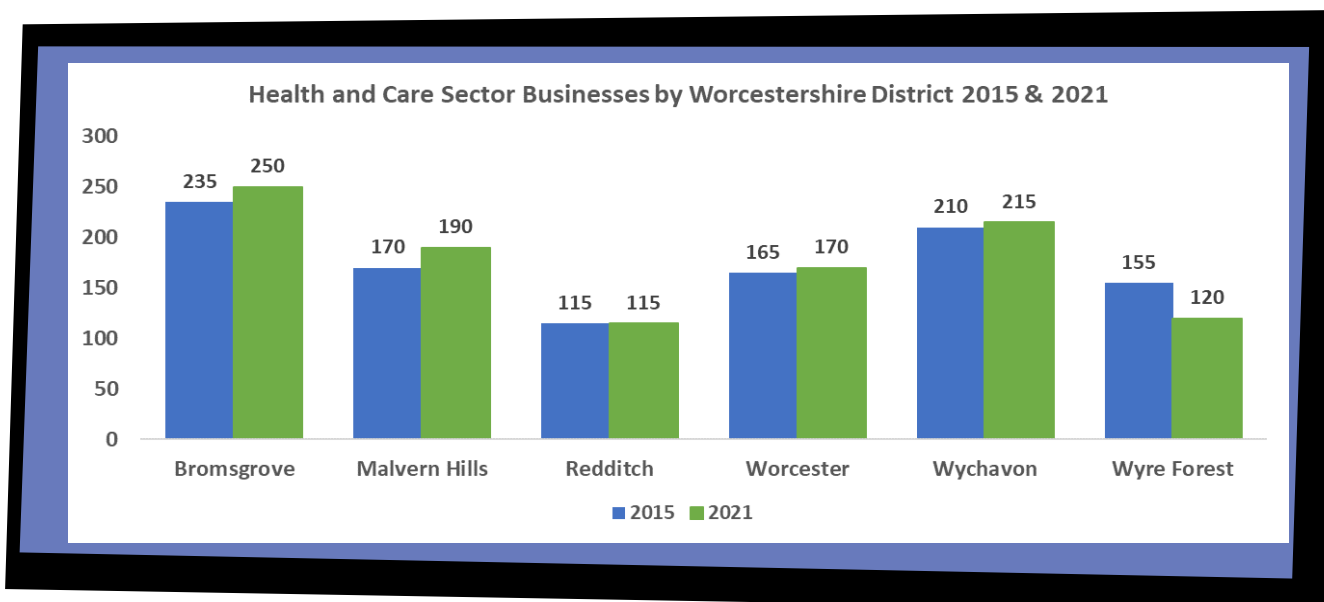


KEY FACTS:

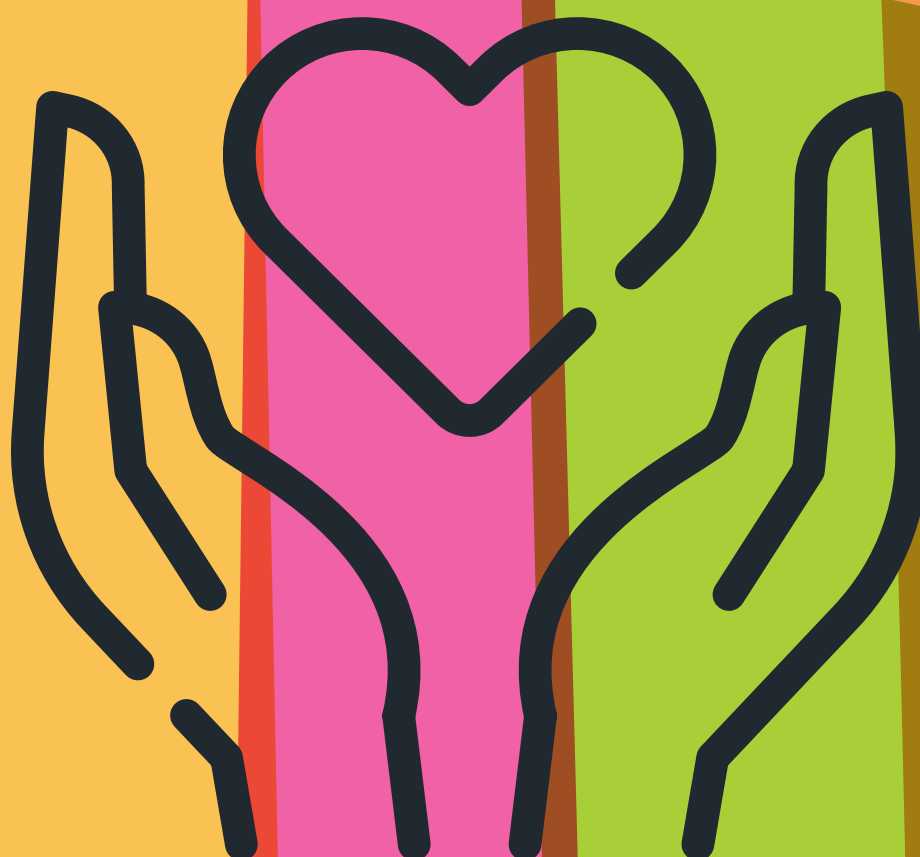
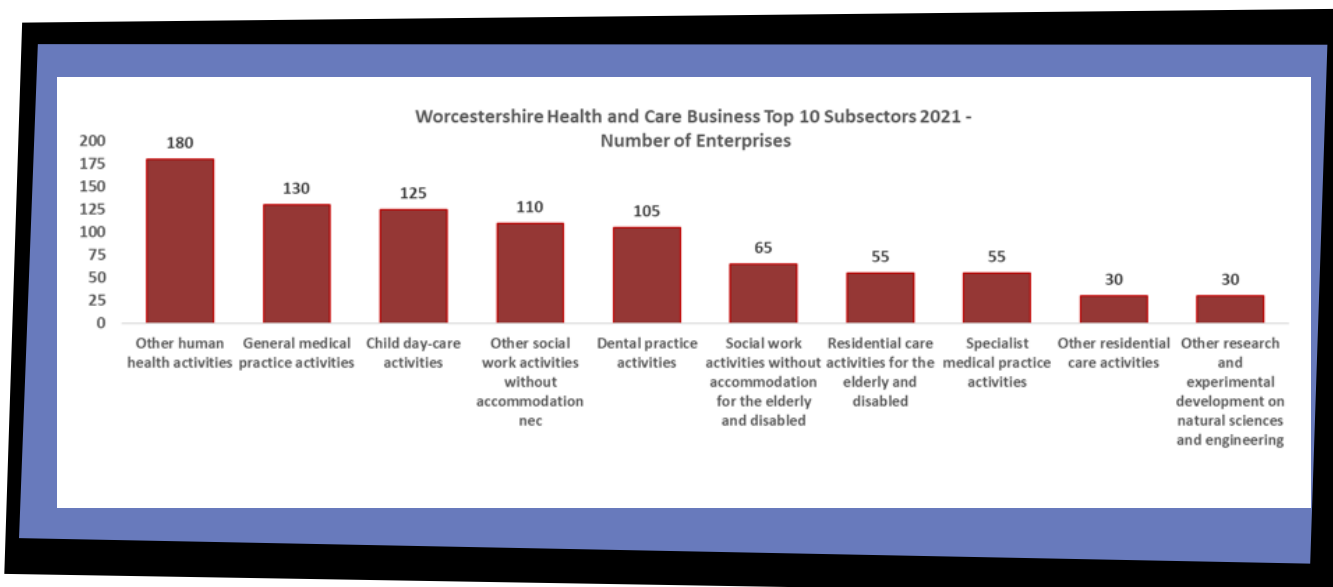
- Currently there are 38,000 people employed in Worcestershire's Health and Care sector.
- Employment in Worcestershire's Health and Care sector as a proportion of total employment (14.1%) is slightly lower than the England average and the West Midlands (both with 14.3%).
- The proportion of people employed in the manufacture of electronic instruments and appliances for measuring and testing is significantly higher in Worcestershire (3.9%) than the England average (0.9%).
- Four of the top 7 Health and Care subsectors have grown in employment from 2019-20:
 - Hospital activities (+1,000 jobs).
 - General medical practice activities (+750 jobs).
- Residential activities for the elderly and disabled and Other human health activities (both with +500 jobs).



- Currently there are 1,000 businesses in Worcestershire's Health and Care sector.



- > From 2020-2021 there has been an increase in the number of businesses (+55 businesses).
- > Worcestershire's rate of increase (+5.5%) compares to a +2.0% increase for the England average and a +1.7% increase for the West Midlands region.
- > The top 3 Health and Care subsectors in Worcestershire are: Other human health activities, General medical practice activities and Child day-care activities.



TOP 10 WORCESTERSHIRE HEALTH AND CARE EMPLOYERS

NHS

WORCESTERSHIRE

Public funded healthcare provider for the UK.

[Website](#)

LEXON (UK) LIMITED

REDDITCH

Independent wholesaler to pharmacies in the UK.

[Website](#)

SANCTUARY CARE LIMITED

WORCESTER

Provider of residential care and support for the elderly and disabled.

[Website](#)

WORCESTERSHIRE CHILDREN FIRST

WORCESTER

Responsible for the delivery of services to children and young people across Worcestershire.

[Website](#)

POLARIS CHILDRENS SERVICES

BROMSGROVE

Provider of care and support for children.

[Website](#)

ACORNS CHILDREN'S HOSPICE

BROMSGROVE

Provider of specialist palliative care for babies, children and young people, and support for their families.

[Website](#)

MALVERN PANALYTICAL LIMITED

MALVERN HILLS

Manufacturer of electronic, measuring and testing equipment.

[Website](#)

KIMAL HOLDINGS LIMITED

BROMSGROVE

Manufacturer and supplier of specialised procedure packs and vascular access devices to hospitals across the world.

[Website](#)

LARCHWOOD HOLDCO LIMITED

BROMSGROVE

Provider of residential care and support for the elderly and disabled.

[Website](#)

ST CLOUD CARE LIMITED

MALVERN HILLS

Provider of residential care and support for the elderly and disabled.

[Website](#)

MADE IN WORCS

- > **Sanctuary Care Limited** is a leading player in the UK residential and nursing homes sector and is a division of Sanctuary Housing Association, whose headquarters are in Worcester. With turnover of £135m, Sanctuary Care has over 100 homes nationwide with 9 located within Worcestershire.
- > **Kimal Holdings** is a manufacturer and supplier of specialized procedure packs and vascular access devices to hospitals and medical facilities globally. From the first cardiology procedure pack in the 1990's, the company now manufactures over 1 million procedure packs annually and its **Vastec** research and development team continues to invest in future product developments at the company's innovation centre in Bromsgrove.
- > Worcestershire is served by 4 hospice organisations: **Acorns Children's Hospice, St Richards Hospice, The Primrose Hospice and Kemp Hospice**. These charitable organisations are reliant on fundraising and donations to enable them to provide care, treatment and therapies and end of life care.
- > Starting from a small company in the 1980's, **AKW Medicare** is a leading supplier and manufacturer of accessible bathroom, kitchen, and daily independent living products. The company works closely with occupational therapists, the care homes sector and Housing Associations to develop products to help customers continue to experience independent living.
- > Located in Malvern, **Smartbox Assistive Technology Limited** is developer and supplier of hardware and software assistive technology solutions to aid communication and independent living for those with communication, mobility, and disability issues. The company recorded turnover of £10.3m in the year to December 2019.

FUTURE OPPORTUNITIES

- > The growth of the Internet of Things (IoT) and increasingly connected systems alongside the enabling of the **5G ecosystem** in the county and good internet connections could result in increased uptake of Assisted Living Technologies to give people increased independence in later life.
- > **Artificial Intelligence (AI)**, remote monitoring and data analytics will be key areas benefiting from such increased connectivity with devices such as blood pressure and ECG monitors increasingly designed as wearable tech.
- > The University of Worcester is a key asset in the health and care sector in Worcestershire. The University offers undergraduate, postgraduate, and professional courses. This includes clinical psychology, nursing, midwifery, paramedic science, occupational therapy, physiotherapy, and social work. The University is also a specialist research centre for dementia studies, whilst the mood disorders research group studies bipolar and other psychotic disorders. In 2022, the university will open the new **Three Counties Medical School** in Worcester.