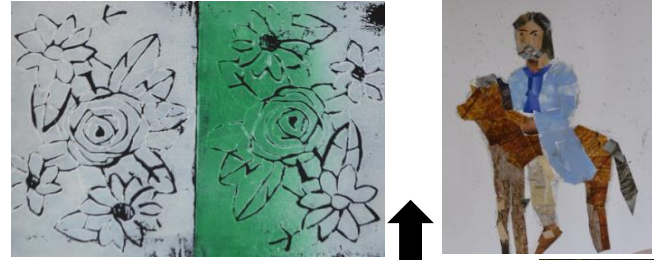




Our Church Knowledge Organiser

You will use your observational drawing skills to sketch interesting images of the church from different angles considering perspective, shape, line and texture.



You will learn new techniques in; lino printing, collage, scratch art, clay moulding, water colours and acrylics.

You will consider how words can also be used as an art form.



One and two point perspective will be taught to help you with your viewpoint.



Using your developed and new skills you will produce your own final piece of art representing St. John's church.

You will research St. John's church history and produce a mood board to inspire your work.



You will be able to evaluate and improve your work as you progress.



Shape Form and Space	Tone	Pattern and Texture	Line	Colour
Closed	Bright	Repeated	Fluent	Bright
Open	Dark	Uniform	Free	Bold
Distorted	Faded	Geometric	Rough	Primary
Flat	Smooth	Random	Controlled	Secondary
Organic	Harsh	Symmetrical	Powerful	Tertiary
Deep	Contrasting	Soft	Strong	Radiant
Positive	Intense	Irregular	Geometric	Dull
Negative	Sombre	Corse	Angular	Vivid
Foreground	Grey	Bold	Light	Contrasting
Background	Strong	Uneven	Delicate	Deep
Elongated	Powerful	Bumpy	Flowing	Monochrome
Curvaceous	Light	Rough	Simple	Complimentary
Composition	Medium	Smooth	Thick	Earthy
Large	Dramatic	Broken	Thin	Subtle
Small	Large	Fine	Horizontal	Pale
3D	Small	Flat	Broken	
2D		Spiky	Interrupted	
			Overlapping	
			Rounded	