

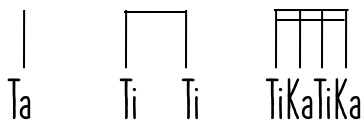
# KNOWLEDGE ORGANISER

# LIVIN' ON A PRAYER

# YEAR 5, UNIT 1



## NOTE DURATIONS



## LIVIN' ON A PRAYER

Song Structure: Intro, verse 1, bridge, chorus, intro, verse 2, bridge, chorus, g solo, bridge, chorus.

Instruments/voices you can hear: Lead vocal, electric guitar, bass guitar, drums, keyboard.

Key questions: Can you find the pulse as you are listening? Is the tempo fast, slow or in between? What is happening with the dynamics?

## KEY WORDS

pulse, duration, rhythm,  
dynamics, tempo, pitch,  
rock, structure, bridge,  
backbeat, amplifier,  
chorus, bridge, riff, hook,  
improvise, compose

## MUSICAL ACTIVITIES USING GLOCKENSPIELS

Warm-up games: play and copy back using up to 3 notes - G, A + B.

Play instrumental parts with the song by ear and from notation using the easy/medium part.

You will be using G, A + B or D, E, F# + G

Improvise using up to 3 notes - G, A + B

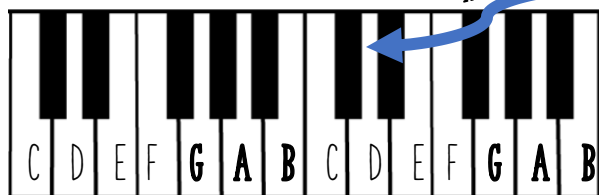
Compose a simple melody using simple rhythms choosing from the notes G, A + B or G, A, B, D + E (Pentatonic Scale).

## PERFORM AND SHARE AS A CLASS/GROUP

The performance will include one or more of the following:

Improvisations • Instrumental performances • Composition.

REMEMBER...



## ABOUT THIS UNIT

Theme: Rock anthems.

Facts/info: Livin' on a Prayer is a Rock song that was released in 1986. The words tell us about life in the 1980's.

## Listen to 5 other rock songs:

- We Will Rock You by Queen
- Smoke On The Water by Deep Purple
- Rockin' All Over The World by Status Quo
- Johnny B. Goode by Chuck Berry
- I Saw Her Standing There by The Beatles

## Reflection

What did you like best about this Unit? Why? Was there anything you didn't enjoy about it? Why?

Were you proud of yourself, happy or annoyed?

What are the 'style indicators' of Rock music? How do you know this is Rock music?