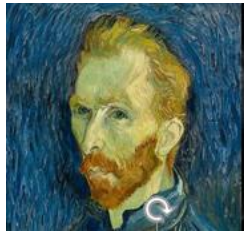


Knowledge



Organiser

Van Gogh



Salvador Dali



Frida Kahlo



Impressionist

Surrealists

Shape Form and Space	Tone	Pattern and Texture	Line	Colour
Closed	Bright	Repeated	Fluent	Bright
Open	Dark	Uniform	Free	Bold
Distorted	Faded	Geometric	Rough	Primary
Flat	Smooth	Random	Controlled	Secondary
Organic	Harsh	Symmetrical	Powerful	Tertiary
Deep	Contrasting	Soft	Strong	Radiant
Positive	Intense	Irregular	Geometric	Dull
Negative	Sombre	Corse	Angular	Vivid
Foreground	Grey	Bold	Light	Contrasting
Background	Strong	Uneven	Delicate	Deep
Elongated	Powerful	Bumpy	Flowing	Monochrome
Curvaceous	Light	Rough	Simple	Complimentary
Composition	Medium	Smooth	Thick	Earthy
Large	Dramatic	Broken	Thin	Subtle
Small	Large	Fine	Horizontal	Pale
3D	Small	Flat	Broken	
2D		Spiky	Interrupted	
			Overlapping	
			Rounded	

Using your understanding of the elements from previous units you will use key vocabulary to discuss the work of other artists.

By looking at the work of Pop Artist Robert Rauschenberg you will identify key aspects and use his work to influence your own self montage.

By experimenting with different materials and using your previous knowledge of medium, colour mixing and shape, you will create an original montage. You will be able to fully explain your choices behind your piece.

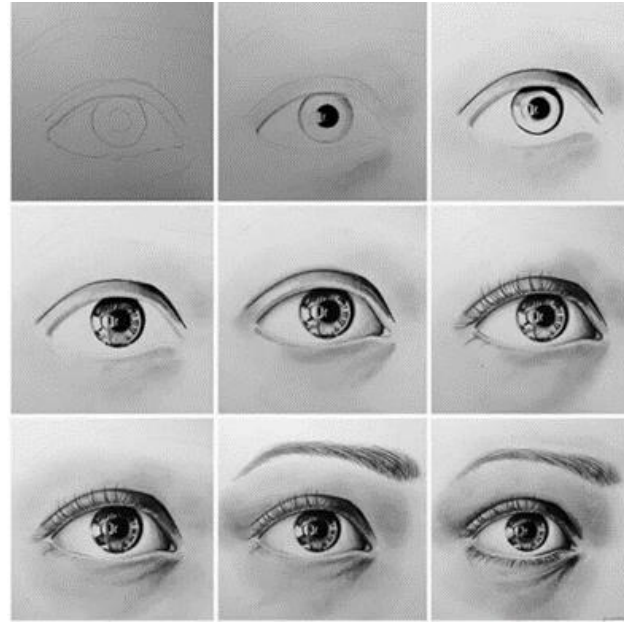


Knowledge



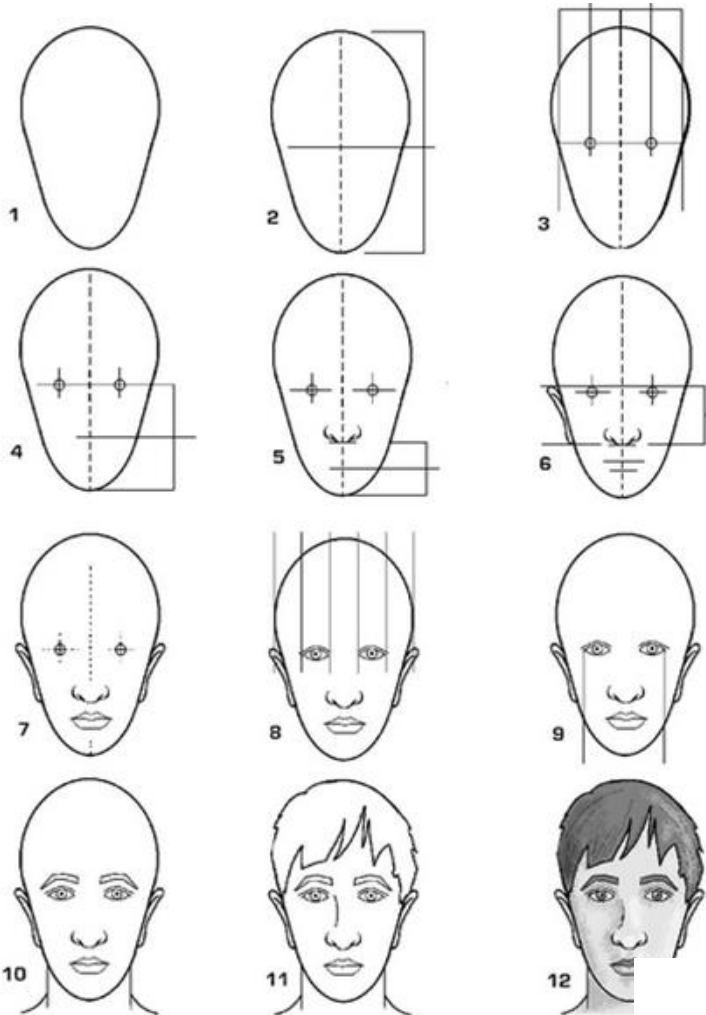
Organiser

You will learn how to draw the human face in proportion



You will use your skills in evaluation to comment on and improve your work

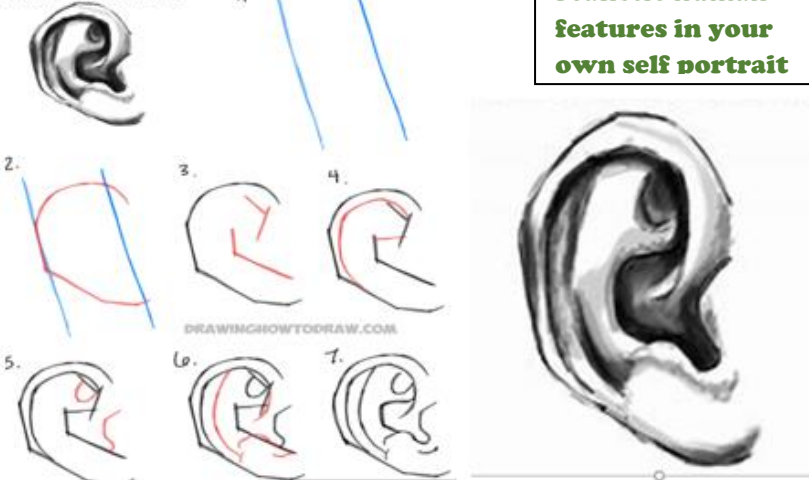
You will learn how to use line and shading to create texture



You will develop previous techniques taught in shading to give depth to your work

You will develop observational skills using shape and tone to create realistic human features in your own self portrait

HOW TO DRAW AN EAR



- **Self-portrait:** An artist that is drawn, painted, sculpted or photographed of themselves.
- **Proportion:** How the sizes of features are relatable to each other.